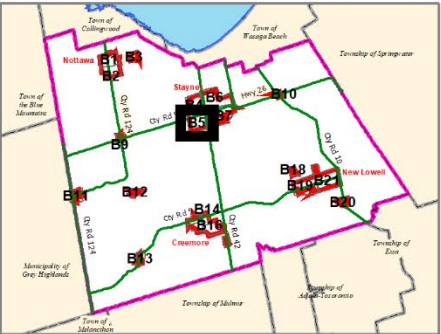


CLEARVIEW TOWNSHIP  
COMPREHENSIVE ZONING BY-LAW

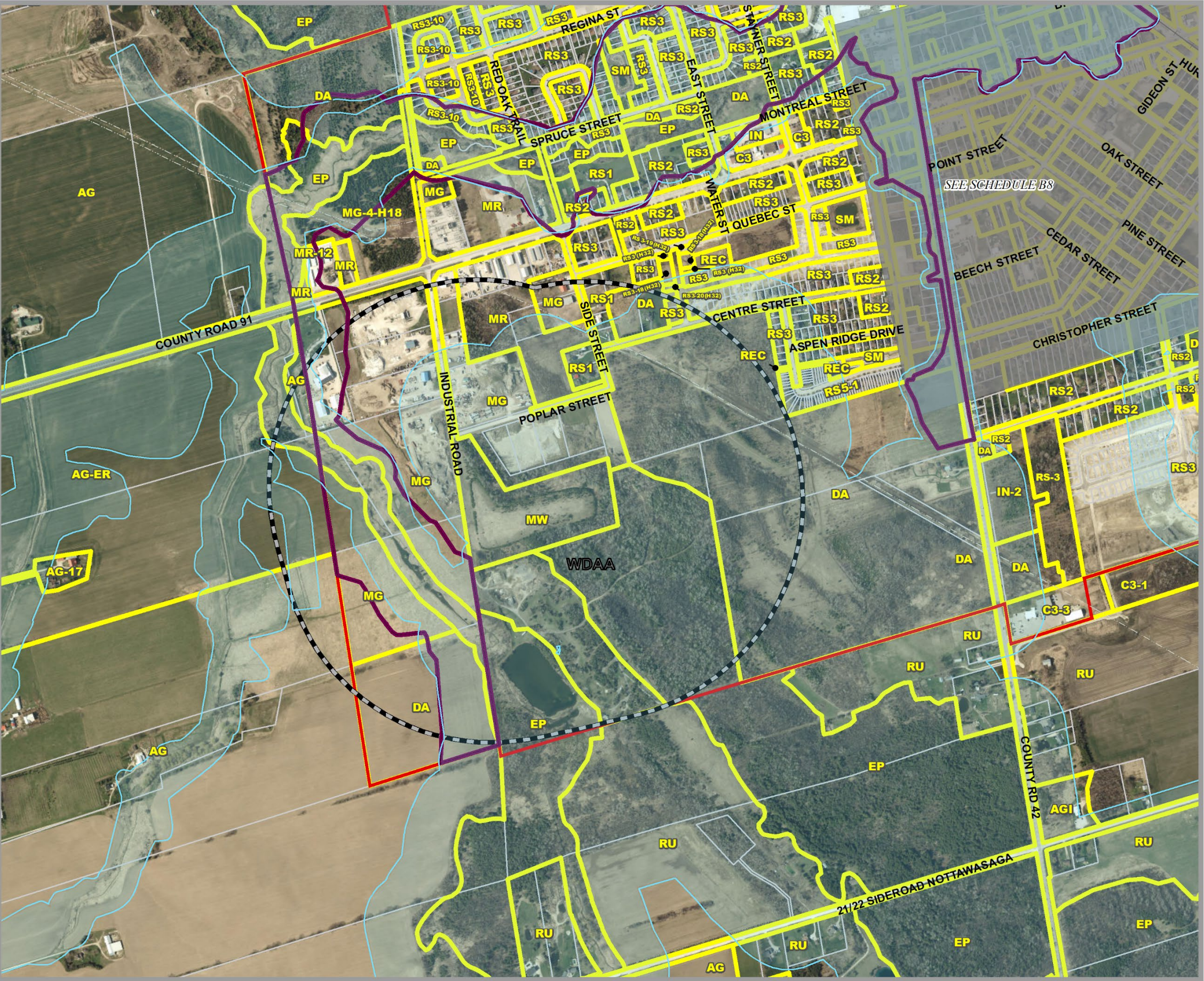
SCHEDULE B5 SOUTH WEST STAYNER AREA



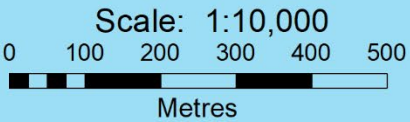
<b>AGRICULTURAL</b>		<b>INDUSTRIAL GENERAL</b>	
AG	AGRICULTURAL	MP	INDUSTRIAL PRESTIGE
AGC	AGRICULTURALLY RELATED COMMERCIAL	MR	INDUSTRIAL RESTRICTED
AG-EL	AGRICULTURAL LIVESTOCK USE EXCEPTION	MW	INDUSTRIAL WASTE DISPOSAL
AG-ER	AGRICULTURAL RESIDENTIAL USE EXCEPTION	<b>NIAGARA ESCARPMENT</b>	
AGI	AGRICULTURALLY RELATED INDUSTRIAL	NEC	NIAGARA ESCARPMENT COMMISSION
AGK	AGRICULTURAL KENNEL	<b>RECREATION</b>	
<b>COMMERCIAL</b>		REC	RECREATION LANDS
C1	COMMERCIAL GENERAL	RECT	RECREATIONAL TRAIL
C2	COMMERCIAL HIGHWAY	<b>RESIDENTIAL</b>	
C3	COMMERCIAL SERVICE	RE	RESIDENTIAL ESTATE
C4	COMMERCIAL LARGE FORMAT	RS	RESIDENTIAL HAMLET
C5	COMMERCIAL NEIGHBOURHOOD	RS1	RESIDENTIAL LARGE LOT
C6	COMMERCIAL COUNTRY	RS2	RESIDENTIAL LOW DENSITY
CT1	COMMERCIAL TRANSITION 1	RS3	RESIDENTIAL MULTIPLE LOW DENSITY
CT2	COMMERCIAL TRANSITION 2	RS4	RESIDENTIAL MEDIUM DENSITY
RECC	COMMERCIAL RECREATION LANDS	RS5	RESIDENTIAL MULTIPLE MEDIUM DENSITY
<b>ENVIRONMENTAL</b>		RS6	RESIDENTIAL HIGH DENSITY
EP	ENVIRONMENTAL PROTECTION	RSBB	SETTLEMENT AREA B&B
<b>DEVELOPMENT AREA</b>		<b>RURAL</b>	
DA	DEVELOPMENT AREA	RU	RURAL
<b>INSTITUTIONAL</b>		RUK	RURAL KENNEL
IN	INSTITUTIONAL		
INR1	INSTITUTIONAL RESIDENTIAL 1		
INR2	INSTITUTIONAL RESIDENTIAL 2		
<b>INDUSTRIAL</b>			
MA	INDUSTRIAL AIRPORT		

	Settlement Area Boundary		Subject to Appeal Before OMB
	Commercial Transition 1 Area		Niagara Escarpment Boundary
	FP Hazard Land Area		Zone Boundary
	FPSP Hazard Land Special Policy		Parcel Boundary
	MARA Mineral Aggregate Resource Area		Utility Line
	WDAA Waste Disposal Assessment Area		Railway
	WHPA Well Head Protection Area		Abandoned Railway

By-Law 06-54  
As Approved by Council, October 23, 2006  
*Fran Sainsbury*  
Fran Sainsbury, Mayor  
*Robert Campbell*  
Robert Campbell, Clerk



This map, either in whole or in part, may not be reproduced without the written authority from the County of Simcoe.  
Copyright © County of Simcoe  
Land Information Network Cooperative - LINC 2014  
Produced (in part) under license from the County of Simcoe & Ontario, Inc.  
© 2014 Simcoe County Council, and its members all rights reserved.  
and Members of the Ontario Municipal Association  
THIS IS NOT A PLAN OF SURVEY.  
For information call (705) 726-0300 or visit www.simcoe.ca



Note: All the elements in the legend may not appear on the map.  
SCHEDULE B5 SOUTH WEST STAYNER.PDF