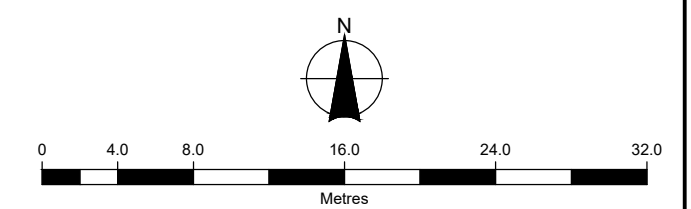


**LEGEND**

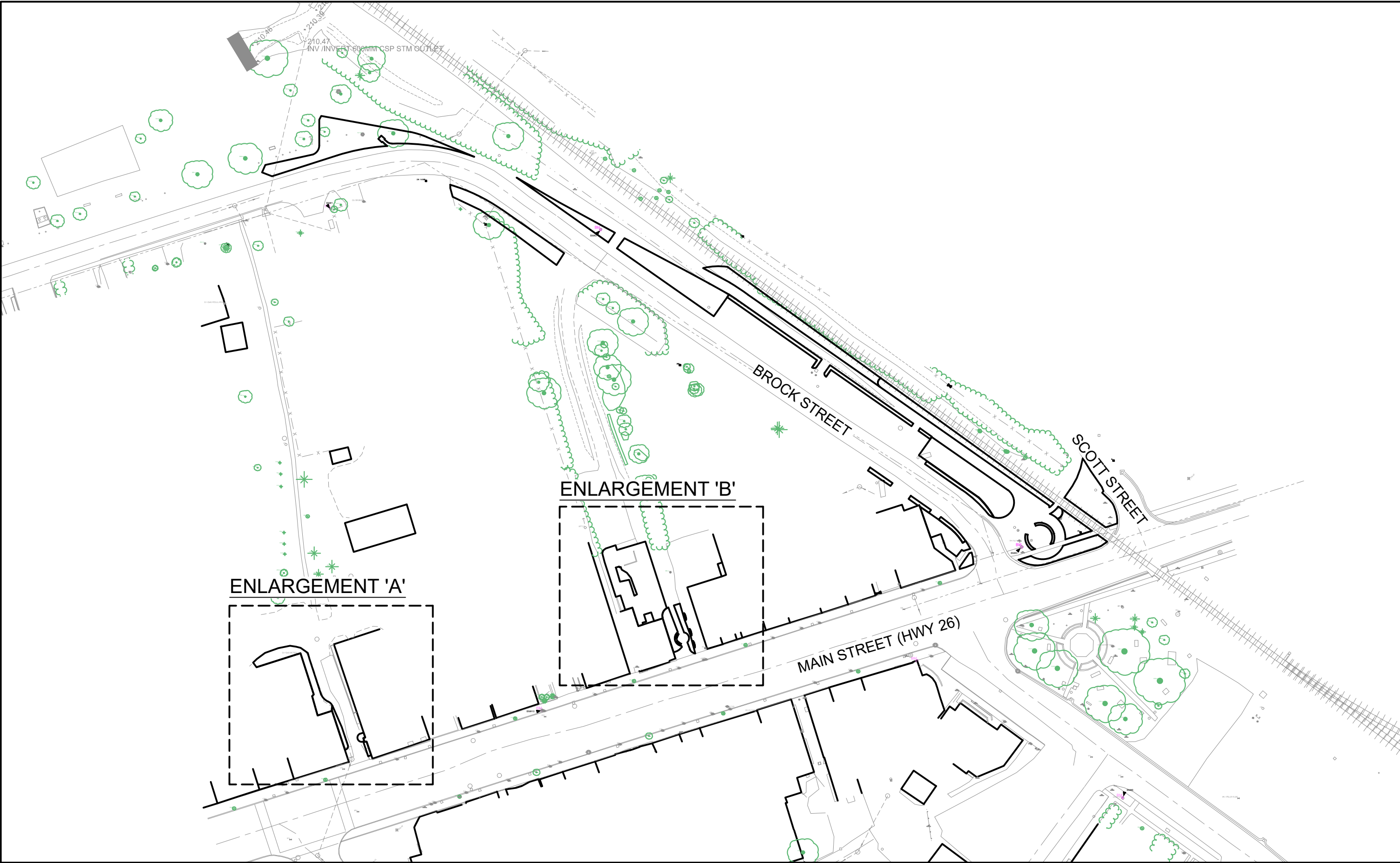
- EXISTING TREE
- LANDSCAPED GRASSED AREA
- LANDSCAPED PLANTING BED
- PROPOSED CONCRETE PATH
- PROPOSED LIMESTONE SCREENING PATH
- PROPOSED GRAVEL PATH
- PROPOSED FLAGSTONE PATH
- EXISTING HYDRO POLE WITH OVER HEAD WIRE
- BOLLARD LIGHTING (SEE DETAIL 1.5)
- STREET LIGHTING



Client			
TOWNSHIP OF CLEARVIEW			
Figure Title			
STAYNER DOWNTOWN RENEWAL			
LANDSCAPE PLAN - LAYOUT AND AREA TREATMENTS			
Drawn	Checked	Date	Figure No.
KW	HTL	21/02/26	
Scale	Project No.		
1:400	300039152		



PLANTING KEYPLAN



PLANTING SCHEDULE

ID	Quantity	Botanical Name	Common Name	Size/Details	Spacing
Trees					
Qm	2	<i>Quercus macrocarpa</i>	Burr Oak	70mm WB	As Shown
	2	Total			
Shrubs, Perennials + Grasses					
Cs	8	<i>Cornus sericea</i>	Red-Osier Dogwood	50cm 3 Gal	As Shown
Hm	184	<i>Heuchera micrantha</i>	Coral Bells	1 Gal Pot	1.0m OC
Hp	3	<i>Hydrangea petiolaris</i>	Climbing Hydrangea	1 Gal Pot	As Shown
Rh	13	<i>Rudbeckia hirta</i>	Black-eyed Susan	3 Gal Pot	1.5m OC
208	Total				

PLANTING ENLARGEMENT 'A'

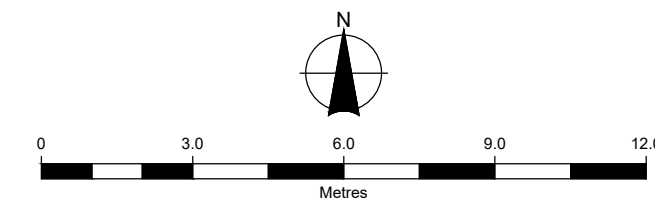


PLANTING ENLARGEMENT 'B'



LEGEND

- EXISTING TREE
- PROPOSED TREE
- PROPOSED SHRUB / PERENNIAL
- LANDSCAPED GRASSED AREA
- LANDSCAPED PLANTING BED
- EXISTING HYDRO POLE WITH OVER HEAD WIRE
- BOLLARD LIGHTING
- STREET LIGHTING



**BURNSIDE**

Client

TOWNSHIP OF CLEARVIEW

Figure Title

STAYNER DOWNTOWN RENEWAL

LANDSCAPE PLAN - PLANTING PLAN

Drawn

KW

Scale

1:150

Checked

HTL

Date

21/02/26

Project No.

300039152

Figure No.

L-101

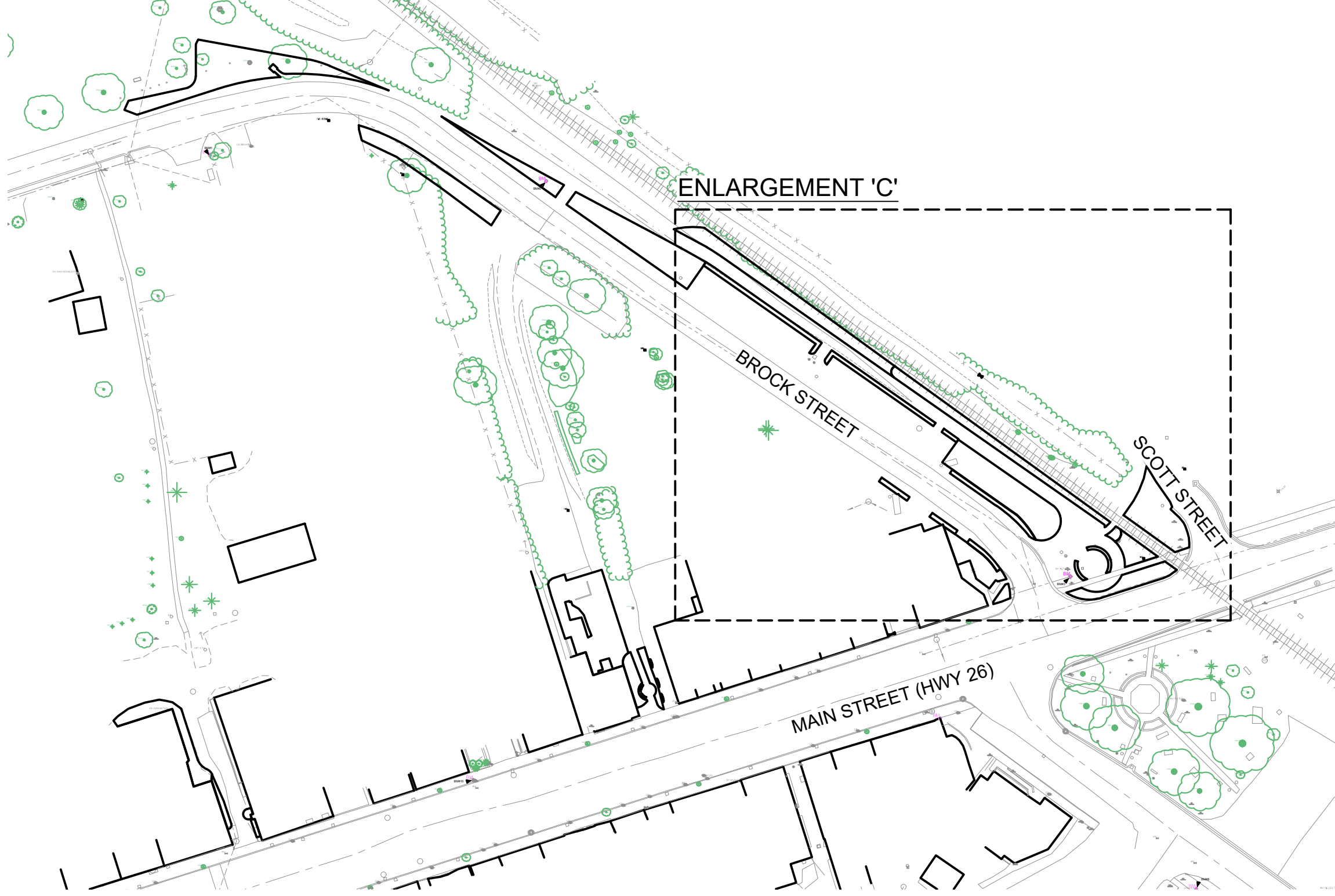
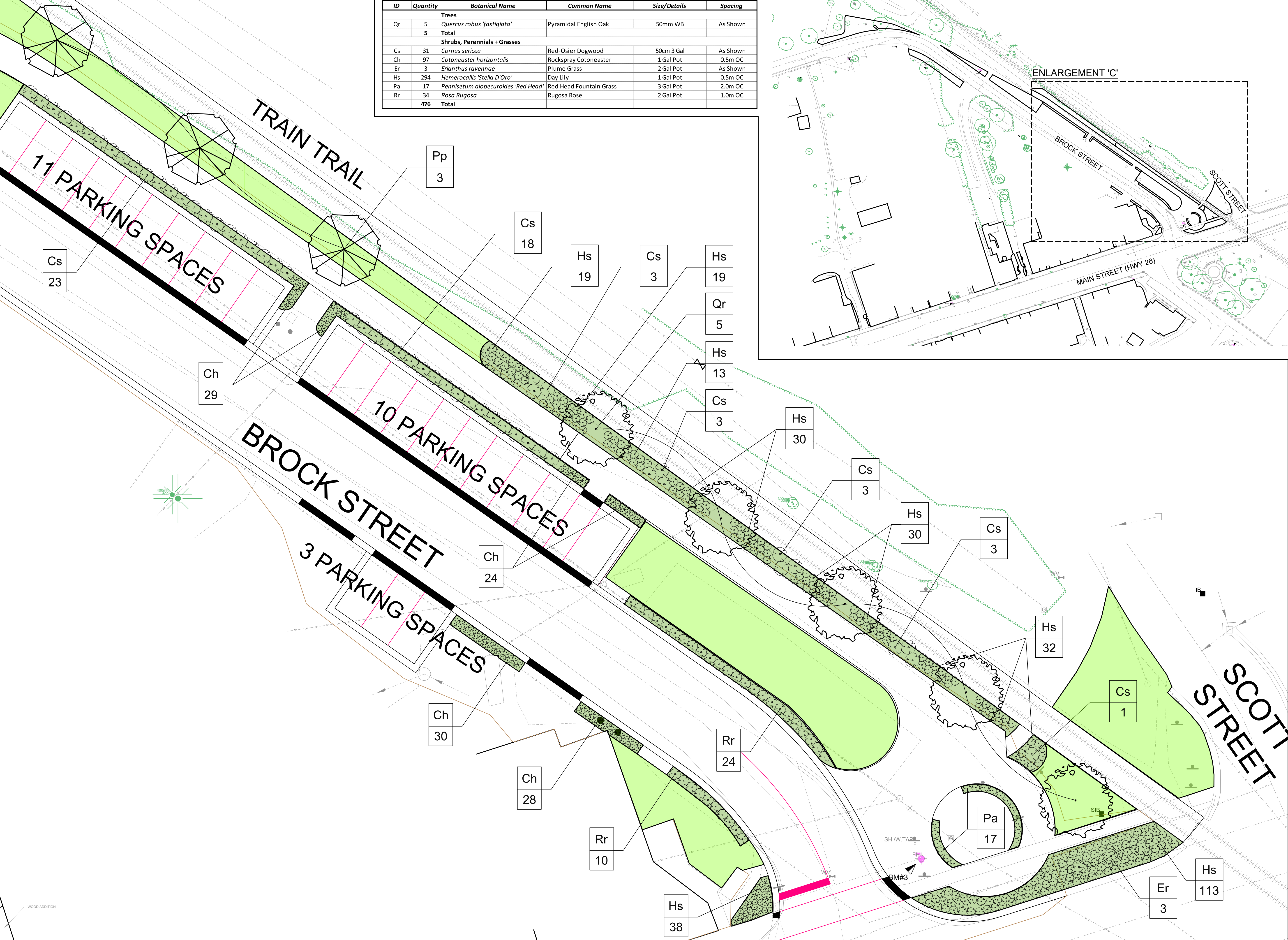


PLANTING ENLARGEMENT 'C'

PLANTING SCHEDULE

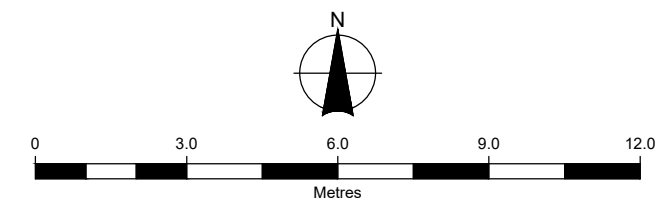
PLANTING KEYPLAN

ID	Quantity	Botanical Name	Common Name	Size/Details	Spacing
Trees					
Qr	5	<i>Quercus robur 'fastigiata'</i>	Pyramidal English Oak	50mm WB	As Shown
	5	Total			
Shrubs, Perennials + Grasses					
Cs	31	<i>Cornus sericea</i>	Red-Osier Dogwood	50cm 3 Gal	As Shown
Ch	97	<i>Cotoneaster horizontalis</i>	Rockspray Cotoneaster	1 Gal Pot	0.5m OC
Er	3	<i>Erianthus ravennae</i>	Plume Grass	2 Gal Pot	As Shown
Hs	294	<i>Hemerocallis 'Stella D'Oro'</i>	Day Lily	1 Gal Pot	0.5m OC
Pa	17	<i>Pennisetum alopecuroides 'Red Head'</i>	Red Head Fountain Grass	3 Gal Pot	2.0m OC
Rr	34	<i>Rosa Rugosa</i>	Rugosa Rose	2 Gal Pot	1.0m OC
	476	Total			



LEGEND

- EXISTING TREE
- PROPOSED TREE
- PROPOSED SHRUB / PERENNIAL
- LANDSCAPED GRASSED AREA
- LANDSCAPED PLANTING BED
- EXISTING HYDRO POLE WITH OVER HEAD WIRE
- BOLLARD LIGHTING
- STREET LIGHTING



BURNSIDE

Client

TOWNSHIP OF CLEARVIEW

Figure Title

STAYNER DOWNTOWN RENEWAL

LANDSCAPE PLAN - PLANTING PLAN

Drawn

KW

Checked

HTL

Date

21/02/26

Project No.

300039152

Figure No.

L-102

File: C:\working\clearview\work\area\030152\030152\_LANDSCAPE\_LAYOUT.dwg Date Plotted: February 26, 2024 1:23:38 PM

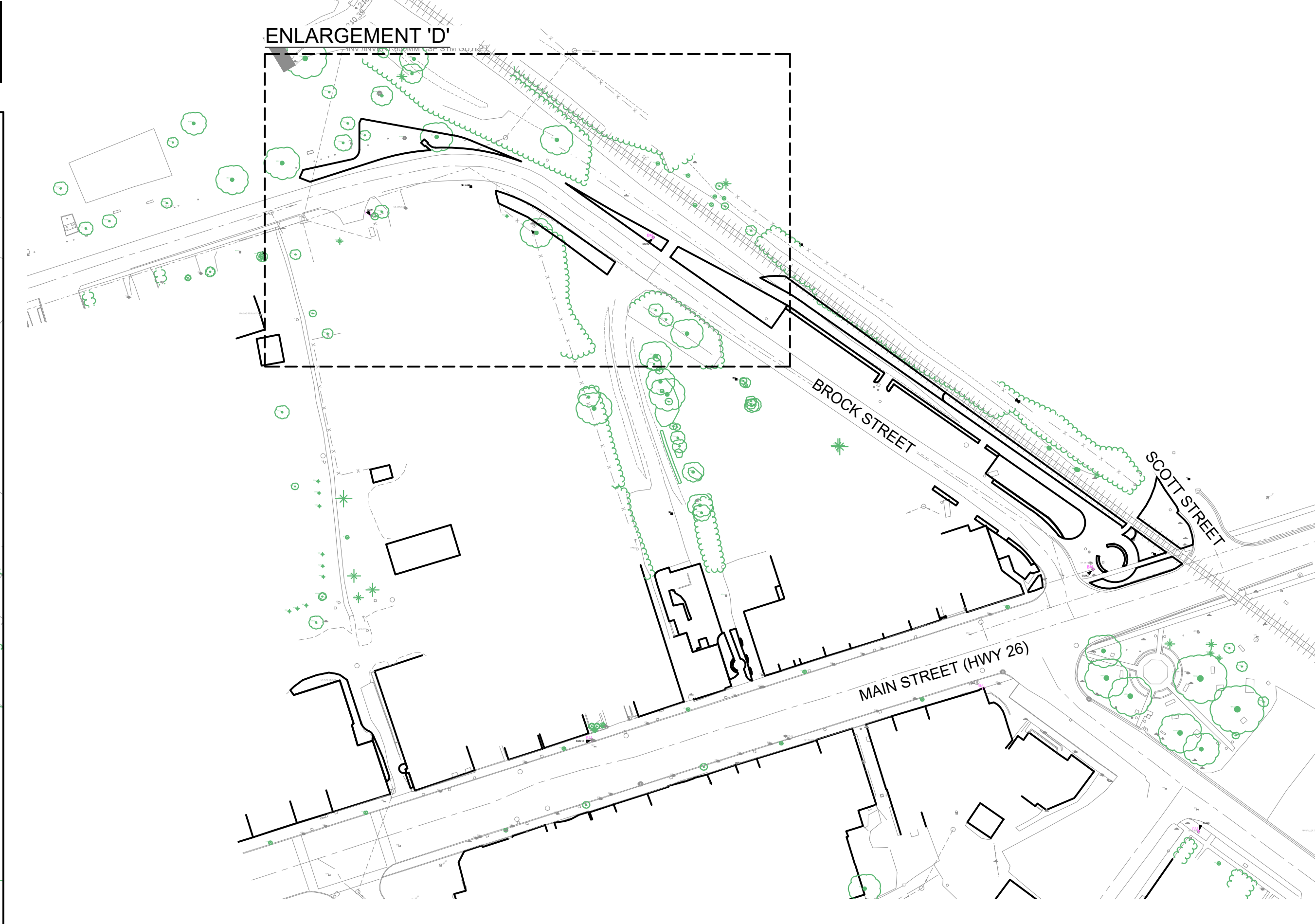
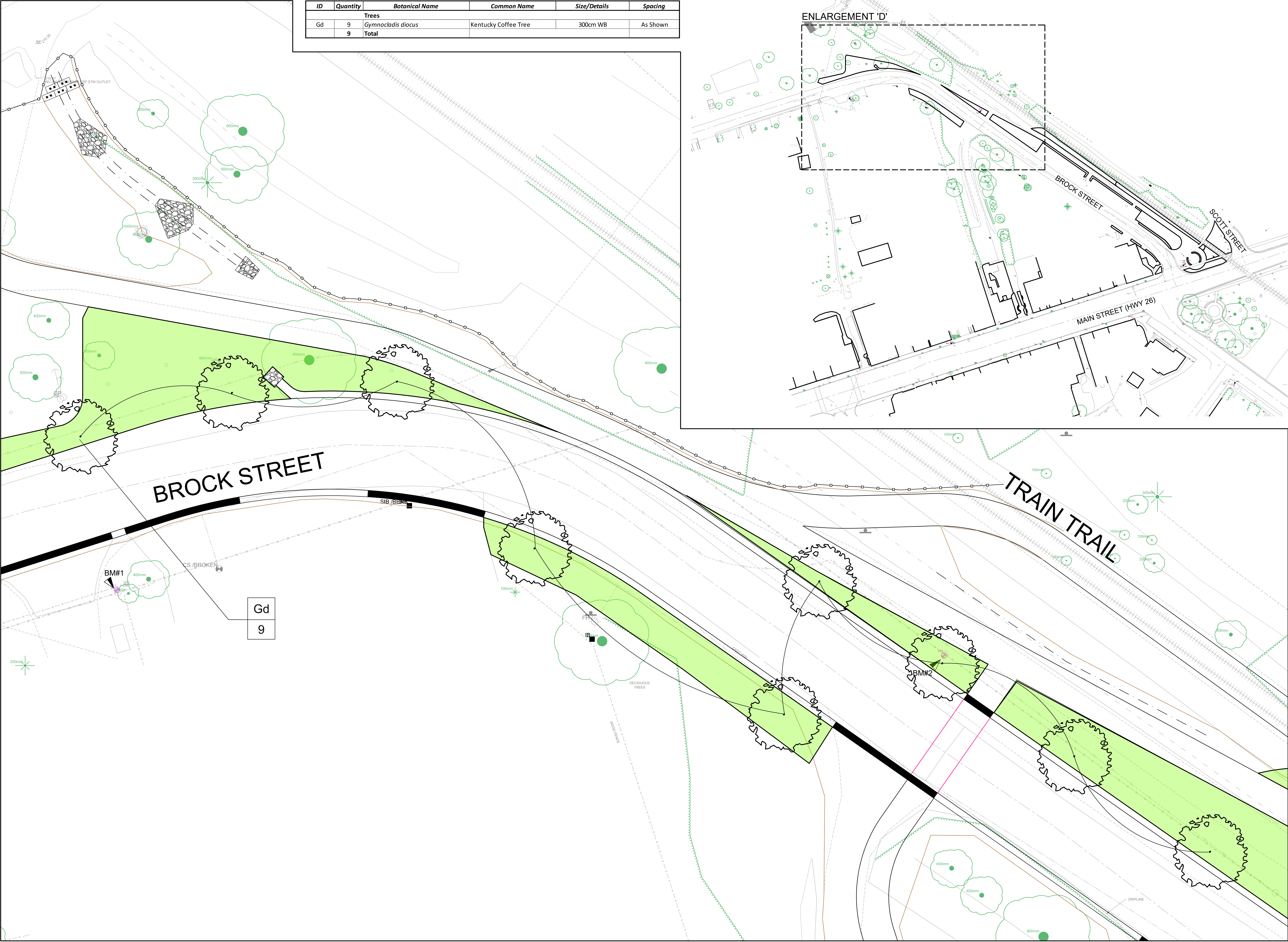


PLANTING ENLARGEMENT 'D'

PLANTING SCHEDULE

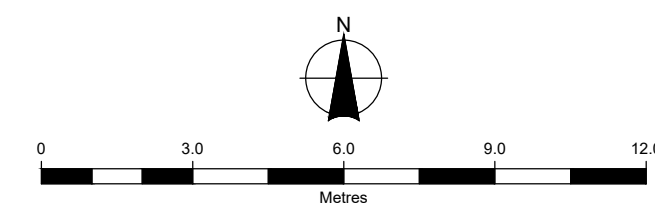
PLANTING KEYPLAN

ID	Quantity	Botanical Name	Common Name	Size/Details	Spacing
Trees					
Gd	9	<i>Gymnocladis diocus</i>	Kentucky Coffee Tree	300cm WB	As Shown
	9	Total			



LEGEND

- EXISTING TREE
- PROPOSED TREE
- PROPOSED SHRUB / PERENNIAL
- LANDSCAPED GRASSED AREA
- LANDSCAPED PLANTING BED
- EXISTING HYDRO POLE WITH OVER HEAD WIRE
- BOLLARD LIGHTING
- STREET LIGHTING



Client

TOWNSHIP OF CLEARVIEW

Figure Title

STAYNER DOWNTOWN RENEWAL

039152-LANDSCAPE LAYOUT - PLANTING PLAN

Drawn

KW

Checked

HTL

Date

21/02/26

Figure No.

L-103

Scale

1:150

Project No.

300039152

File: \\cityofclearview\share\work\areas\039152\03 - Production\039152-LANDSCAPE LAYOUT.dwg Date Plotted: February 26, 2024 12:40 PM



DO NOT HEAVILY PRUNE THE TREE AT PLANTING. PRUNE ONLY CROSSOVER LIMBS, CO-DOMINANT LEADERS, AND BROKEN OR DEAD BRANCHES. SOME INTERIOR TWIGS AND LATERAL BRANCHES MAY BE PRUNED; HOWEVER, DO NOT REMOVE THE TERMINAL BUDS OF BRANCHES THAT EXTEND TO THE EDGE OF THE CROWN.

STAKE TREES ONLY UPON THE APPROVAL OF THE CONSULTANT.

REMOVE ALL LABELS AND TAGS FROM PLANTS.

INSTALL RODENT GUARD.

50 MM MULCH. DO NOT PLACE MULCH IN CONTACT WITH TREE TRUNK.

SET TOP OF ROOT BALL FLUSH TO PROPOSED GRADE OR 25-50 MM HIGHER IN LOWLY DRAINING SOILS.

ALL T-BAR AND FASTENERS TO BE REMOVED BY THE CONTRACTOR AFTER TWO GROWING SEASONS.

EACH TREE MUST BE PLANTED SUCH THAT THE TRUNK FLARE IS VISIBLE AT THE TOP OF THE ROOT BALL. TREES WHERE THE TRUNK FLARE IS NOT VISIBLE SHALL BE REJECTED. DO NOT COVER THE TOP OF THE ROOT BALL WITH SOIL.

100 MM HIGH EARTH SAUCER BEYOND EDGE OF ROOT BALL.

REMOVE ALL TWINE, ROPE AND WIRE, AND BURLAP FROM TOP HALF OF ROOT BALL.

PLACE ROOT BALL ON UNEXCAVATED OR TAMPED SOIL.

IF PLANT IS SHIPPED WITH A WIRE BASKET AROUND THE ROOT BALL, CUT THE WIRE BASKET IN FOUR PLACES AND FOLD DOWN 200 MM INTO PLANTING HOLE.

WIRE BASKET DECIDUOUS TREE NTS	<b>BURNSIDE</b> RJB 1.1
-----------------------------------	----------------------------

DO NOT HEAVILY PRUNE THE TREE AT PLANTING. PRUNE ONLY CROSSOVER LIMBS, CO-DOMINANT LEADERS, AND BROKEN OR DEAD BRANCHES. SOME INTERIOR TWIGS AND LATERAL BRANCHES MAY BE PRUNED; HOWEVER, DO NOT REMOVE THE TERMINAL BUDS OF BRANCHES THAT EXTEND TO THE EDGE OF THE CROWN.

STAKE TREES ONLY UPON THE APPROVAL OF THE CONSULTANT.

REMOVE ALL LABELS AND TAGS FROM PLANTS.

50 MM MULCH. DO NOT PLACE MULCH IN CONTACT WITH TREE TRUNK.

SET TOP OF ROOT BALL FLUSH TO GRADE OR 25-50 MM HIGHER IN LOWLY DRAINING SOILS.

100 MM HIGH EARTH SAUCER BEYOND EDGE OF ROOT BALL.

REMOVE ALL TWINE, ROPE AND WIRE, AND BURLAP FROM TOP HALF OF ROOT BALL.

PLACE ROOT BALL ON UNEXCAVATED OR TAMPED SOIL.

IF PLANT IS SHIPPED WITH A WIRE BASKET AROUND THE ROOT BALL, CUT THE WIRE BASKET IN FOUR PLACES AND FOLD DOWN 200 MM INTO PLANTING HOLE.

EACH TREE MUST BE PLANTED SUCH THAT THE TRUNK FLARE IS VISIBLE AT THE TOP OF THE ROOT BALL. TREES WHERE THE TRUNK FLARE IS NOT VISIBLE SHALL BE REJECTED. DO NOT COVER THE TOP OF THE ROOT BALL WITH SOIL.

BALLED AND BURLAPPED CONIFEROUS TREE NTS	<b>BURNSIDE</b> RJB 1.2
---	----------------------------

DO NOT HEAVILY PRUNE THE SHRUBS AT PLANTING. PRUNE ONLY CROSSOVER LIMBS, AND BROKEN OR DEAD BRANCHES. SOME INTERIOR TWIGS AND LATERAL BRANCHES MAY BE PRUNED.

REMOVE ALL LABELS AND TAGS FROM PLANTS.

SHRUBS TO BE PLANTED IN CONTINUOUS BEDS.

PLANT SHRUB AT SAME GRADE AS IN CONTAINER.

50 MM MULCH. DO NOT PLACE MULCH IN CONTACT WITH STEM.

POTTED SHRUB NTS	<b>BURNSIDE</b> RJB 1.3
---------------------	----------------------------

1.82

0.56

R3.07

0.42

- ALL STEEL MEMBERS COATED WITH ZINC RICH EPOXY THEN FINISHED W POLYESTER POWDER COATING
- TO BE BOLTED ON A CONCRETE PAD AND PAINTED BLACK TO MATCH.
- SOURCED THROUGH DUMOR INC. MODEL NUMBER R92-120-6. BLACK.
- CONTRACTOR TO PROVIDE SHOP DRAWINGS FOR MOUNTING DETAIL.

CURVED BENCH SCALE 1:40	<b>BURNSIDE</b> RJB 1.4
----------------------------	----------------------------

1.02

0.26

- BOLLARD, ALUMINUM, 25W LED, 3000K, TYPE V CONE, 120V
- TO BE MOUNTED ON 300mm DIAMETER AND 1.2m DEPTH CONCRETE FOOTING WITH ELECTRICAL SLEEVING.
- SOURCED THROUGH HADCO BY SIGNIFY.COM. MODEL NUMBER OB361. BLACK.
- CONTRACTOR TO PROVIDE SHOP DRAWINGS FOR FOOTING AND CONDUIT DETAIL.
- CONTRACTOR TO OBTAIN BOLT PATTERN TEMPLATE FROM MANUFACTURER.

BOLLARD SCALE 1:40	<b>BURNSIDE</b> RJB 1.5
-----------------------	----------------------------

3.66

R300mm

R190mm

1.22

0.80

1.52

2.06

0.42

CLEARVIEW LOGO

25mm SQUARE GALVANIZED STEEL TUBE, BLACK

METAL PANELS SIZED TO FIT SPACE

CONCRETE FOOTINGS

- TO BE FABRICATED BY LOCAL ARTIST
- CONTRACTOR TO PROVIDE SHOP DRAWINGS FOR TRELLIS FABRICATION, SQUARE STEEL TUBE SIZES AND WALL THICKNESS, WELDING AND WELD JOINT FINISHING, BLACK PAINT PROCESS AND FINISHING, AND FOUNDATION FOOTING DETAIL.
- CONTRACTOR TO PROVIDE 300mL TOUCH UP PAINT.

METAL TRELLIS SCALE 1:40	<b>BURNSIDE</b> RJB 1.6
-----------------------------	----------------------------

MASTER PLANTING SCHEDULE

ID	Quantity	Botanical Name	Common Name	Size/Details	Spacing
Trees					
Pp	3	<i>Picea pungens</i>	Colorado Spruce	300cm WB	As Shown
Gd	9	<i>Gymnocladis diocus</i>	Kentucky Coffee Tree	300cm WB	As Shown
Qm	2	<i>Quercus macrocarpa</i>	Burr Oak	70mm WB	As Shown
Qr	5	<i>Quercus robus 'fastigiata'</i>	Pyramidal English Oak	50mm WB	As Shown
	19	Total			
Shrubs, Perennials + Grasses					
Cs	62	<i>Cornus sericea</i>	Red-Osier Dogwood	50cm 3 Gal	As Shown
Ch	111	<i>Cotoneaster horizontalis</i>	Rockspray Cotoneaster	1 Gal Pot	0.5m OC
Er	3	<i>Erianthus ravennae</i>	Plume Grass	2 Gal Pot	As Shown
Hm	184	<i>Heuchera micrantha</i>	Coral Bells	1 Gal Pot	1.0m OC
Hp	3	<i>Hydrangea petriolaris</i>	Climbing Hydrangea	1 Gal Pot	As Shown
Hs	294	<i>Hemerocallis 'Stella D'Oro'</i>	Day Lily	1 Gal Pot	0.5m OC
Pa	17	<i>Pennisetum alopecuroides 'Red Head'</i>	Red Head Fountain Grass	3 Gal Pot	2.0m OC
Rr	34	<i>Rosa Rugosa</i>	Rugosa Rose	2 Gal Pot	1.0m OC
Rh	13	<i>Rudbeckia hirta</i>	Black-eyed Susan	3 Gal Pot	1.5m OC
	708	Total			

0 500 1,000 1,500 2,000  
Millimetres

**BURNSIDE**

Client  
**TOWNSHIP OF CLEARVIEW**

Figure Title  
**STAYNER DOWNTOWN RENEWAL**  
039152-LANDSCAPE LAYOUT - DETAILS

Drawn KW	Checked HTL	Date 21/02/26	Figure No. <b>L-104</b>
Scale 1:40	Project No. 300039152		